

LEVAGE FUSION

Reshaping Laser System

RETHINK the way
You do AESTHETIC



The New Way of Aesthetics

LEVAGE FUSION is an advanced state-of-the-art endodermal laser platform focused on aesthetic treatments.

This multipurpose system triggers regenerative processes in the skin and promotes fat lipolysis. Both processes act synergistically, offering long-lasting, high-impact results in a single session, marking a milestone in the demand for today's aesthetic procedures.



Facial and Body

High Impact Results

One Session

Platform Multiple

Unique Results

Its double wavelength and high precision pulse emission allow the energy to work selectively in the tissues, without damage or adverse effects, achieving exceptional results in high demand procedures.

FUSION

LEVAGE FUSION produces both lasers independently without their energy levels affecting each other, which ensures high quality results, unlike other multi-lasers that produce higher thermal damage, with low thermo-selective effect and inconsistent results.

FACIAL

Facelift
Jowl Lipo
HD Contouring

BODY

Abdominal Lipo
Arm Lipo
Contouring

980 nm

Coagulation, Thermocontraction, phototherapy, photobiomodulation

1470 nm

Fat lipolysis, skin retraction, production of collagen, elastin

FUSION

HD lipolysis, better results with less energy, higher liquefaction, higher shrinkage

Smart Pulse

The fusion of the two wavelengths under the Smart Pulse mode sets a new gold standard in aesthetic endodermal laser procedures, with great advantages:

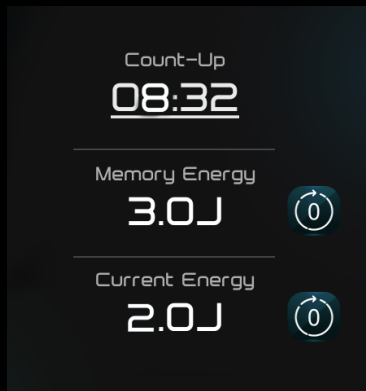
- Faster recovery.
- Less likelihood of bruising.
- More consistent HD results.
- More controlled post-treatment.

The Smart Pulse, in addition to exponentially increasing efficiency and performance, provides the surgeon with greater versatility, expanding his range of services and considerably improving the patient's experience.

Personalize your treatment	980 nm	1470 nm	Smart Pulse
More effective disruption of adipose tissue		✓	✓
Targeted heating for faster recovery		✓	✓
Areas of skin laxity		✓	✓
Broad tissue heating for tightening through thermo coagulation	✓		✓
Smaller treatment areas, such as face and neck	✓		✓
Reduction of bleeding and bruising	✓		✓
Photobiomodulation for regeneration and scarring	✓		

Smart Counter

A double counter makes it possible to count the amount of energy deposited on each side, which facilitates uniform results.



Auto Calibrator

Lasers over time and movement become decalibrated, causing inconsistent treatment results. LEVAGE FUSION is the first and only one with an innovative integrated auto calibrator that automatically measures and adjusts the energy ensuring that it always remains stable.



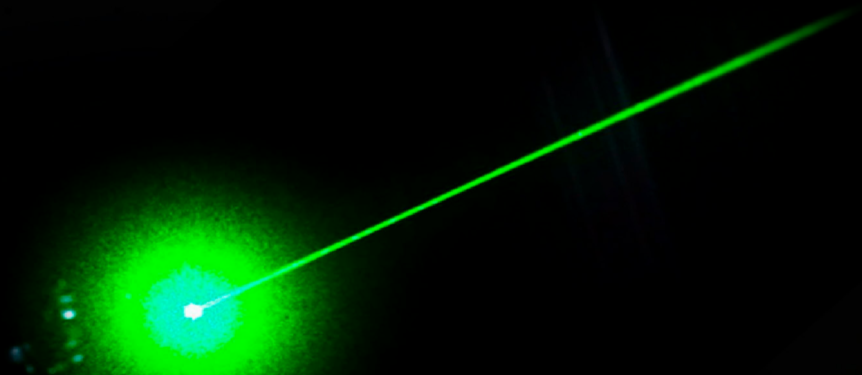
Thermal Sensor

It includes a thermal camera system that is positioned over the patient. This provides real-time visual temperature monitoring, increasing the safety and reliability of the treatment.



Green Laser Guide

Its innovative green laser guide offers improved visibility and accuracy in identifying skin planes, increasing efficiency and reducing eyestrain.



Treatment Menu

Automatic setup program for easily accessible treatments. Automatic software updates also add or update treatment protocols.



New Generation Software

When the manufacturer releases software enhancements or new options, the system is updated via WiFi. This gives you access to always have the latest version of the system without additional costs.

The Highest Profitability

With no consumables, an affordable system-cost, and procedures that generate above-average revenue, Levage Fusion offers an immediate return on investment.

Exovascular Applicator

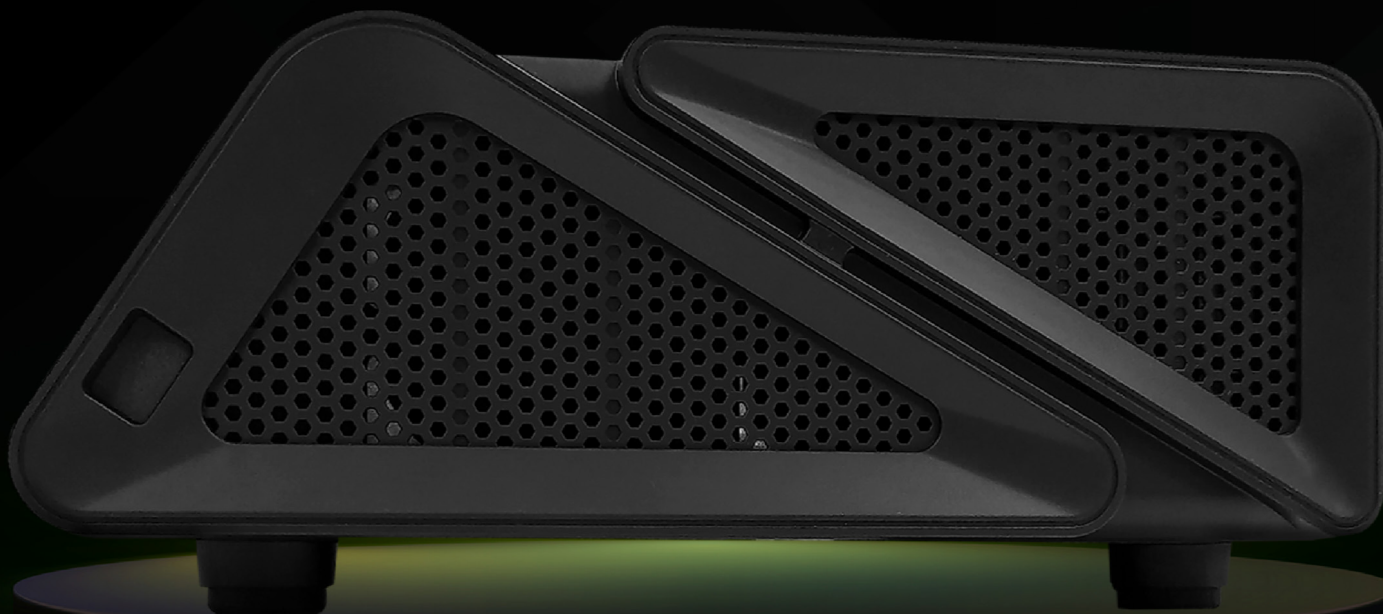
Handpiece and 3 optics for the removal of superficial vascular lesions such as telangiectasias or angiomas.



Phototherapy Applicator

A handpiece designed specifically for post-procedural phototherapy. The application of the laser at prolonged low powers, through its photochemical effect increases intracellular metabolism. This promotes the recovery of the treated tissues, facilitating a significant decrease in edema and favoring regeneration at the neural, muscular and articular levels.

This not only improves tissue regeneration, but also relieves pain and reduces inflammation, accelerating the healing process and improving the patient's experience.





Real Results. One Fusion Session



Photos are courtesy of Dr. Moises Bensayan DMD, Dr. Kevin Mendoza MD.



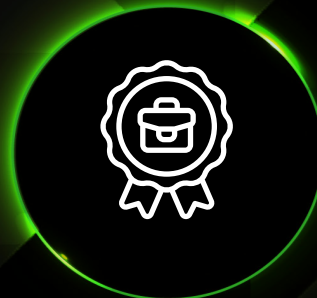
Why LEVAGE FUSION?



Technological Innovation
Levage Fusion uses the most advanced endolaser technology to deliver superior results.



Confidence and Safety
Equipment designed with safety and efficacy in mind, providing peace of mind to both professionals and patients.



Professional Support
Our team of experts is available to provide ongoing training and support, ensuring the success of every treatment.

Specifications

Watts / Wavelength	45 Watts (980nm 30W + 1470nm 15W)
Pulse Width	10-25000ms
Laser guide	Green 520nm
Modes	980nm / 1470nm / Smart Pulse
Measures	29x28x11cm / 5.7Kg - 11x11x4"/12lb

Learn more
www.levage.us



AURORA
Discover the new light